

**Print Speeds  
upto 1600  
mm/sec**

**HP.Technology  
Multiple Control-  
ler Options.**

**Retrofits to all  
horizontal form  
fill and seal pack-  
aging machines**

**Print resolution  
150 to 600DPI**

**Fully Program-  
mable, Fixed  
Texts, Logos,  
Graphics,**

**Continuous or  
Intermittent Mo-  
tion**

**Scanable  
Bar codes Linear  
and 2D**

## **HP-100 Printing Systems** **Thermal InkJet**

*The GREYDON, INC. Thermal inkjet printing systems is yet another tool in offering the appropriate technology for your printing applications. With a variety of controller options and printhead configurations many of your requirements can be met.*

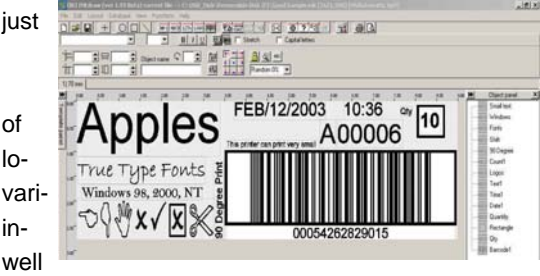
*The maximum number of messages to be created is unlimited, and with a length of 4500 mm. They can be connected via supplied Ethernet and RS232. This gives you the possibility of controlling and operating the printer from anywhere in the production area and thereby providing you with full control.*





## Design Software

The HP-100 series comes with its own label creation software OBJ InkDRAW that allows the user the ability to design and adjust



of  
lo-  
vari-  
in-  
well

your own art-  
work using a  
combination  
fixed text,  
gos, graphics,  
able time date  
formation as  
as both linear

and 2D Barcodes. The software also allows for the step and repeat making any die configuration possible. It is windows based and extremely easy to use.



## Technical Data

Print Technology	Thermal Inkjet (HP)
Print Format	Free edited software
Input Power	115 Opt /220/240V 50/60Hz
Supply Voltage	About 0,kVA
Compressed Air	None.
Signal	Dry Contact
Mounting	As per request
Data Transfer	Internal Digital via USB

## Speed

- 600x600dpi at 39 m/min
- 600x300dpi at 78 m/min
- 600x150dpi at 156 m/min
- 300x600dpi at 39 m/min
- 300x300dpi at 78 m/min (one nozzle)
- 300x300dpi at 156 m/min
- 300x150dpi at 312 m/min

## Resolution and Character Size

- 600, 300, 150, 75 DPI
- Max character size from one print stall is 0.5"
- Max print height per driver card is 52.8"mm

## Service and Supplies

GREYDON,INC. offers a complete line of environmentally safe water-based inks along with cleaner and modifier. Our parts department provides immediate access to complete inventory of replacement parts and accessories. In addition, our Technical Service Department is always on call to help troubleshoot problems and help deliver fast reliable service.

## Cost Saving

Designed for fast format change with very low cost per package print for small batch volumes. Reduces logistic and storage costs, delivery times. Low cost consumables with a long lasting work cycle and low maintenance

## Quality

The printer runs at high speeds with a DPI resolution from 150 to 600 ensuring excellent visual quality and detail sharpness. The printer has few wearable parts in the printing process providing consistent quality.

## Software Features of OBJInkDraw

- Windows 95, 98, NT, 2000
- Simple touch screen user interface
- Fully object oriented. WYSIWG display
- User Interfaces:
  1. Terminal box with graphical display and full keyboard.
  2. Monitor, keyboard, mouse
  3. RS232 or Ethernet
- Time: Multiple formats
- Calendar: Multiple formats including Julian date and automatic scheduler
- Counters: Multiple fully programmable
- Roll over hour/minute/second
- Multiple Postdates
- Barcodes: Code 39, 12of5, UPC-A, EAN I3, Code I28, SCC14, US Postal, Data matrix, and many more. Any variable data function can be embedded in barcodes.
- Fonts: All windows based fonts
- Message length 4000 mm (13 ft.)
- Graphics: Multiple Windows Bmp files
- Ink Usage: Automatically calculated for each message



391 Greendale Rd

York, PA. 17403

Phone: 717-848-3875

Fax: 717-843-6435

## Inks and Ink System

42 ml liter ink supply  
 Variety of colors, Water based inks  
 Lower level ink detection  
 Optional: Large capacity remote bulk

Website  
[www.greydon.com](http://www.greydon.com)

E-mail  
[info@greydon.com](mailto:info@greydon.com)

